

The Seminary Times

Published by the Office of Communications at Louisville Seminary
Available online at http://www.lpts.edu/campus-community/seminary_times.asp

Submit all articles, questions, or inquiries to
Editor Jean Campbell Herp, ext. 360, or jherp@lpts.edu

February 3, 2012
Volume 57, No. 24

Accept the past for what it was. Acknowledge the present for what it is. Anticipate the future for what it can become.

29 Reasons in 29 Days!

Why you should be excited about Louisville Seminary

Join us on Facebook and Twitter during the month of February to discover the exciting reasons to be connected to LPTS right now.

Not connected yet? Sign up today!

Facebook



Twitter



29
REASONS!
in 29 days!
why you should be excited
about Louisville Seminary

Look for this in next week's edition.

February 1 – We will offer **14 merit scholarships** for the Fall 2012 entering class.

All Master's level students are eligible for scholarships. The application deadline is February 15th. Click here to apply online.

February 2 – LPTS **loves pets**. 65 pound lab-mix dog? That's great! Pair of rescued kittens? Fabulous! Two ferrets? Bring them on!

February 3 – Alums of our MAMFT program can look forward to two **"lunch and learn" sessions** next fall, taught by our own, Loren Townsend. CEU's will be available for this programming. Have ideas on what sessions you would like us to offer? Let us know!

CALENDAR: FEBRUARY 6 - 10

Monday, February 6

10:30 a.m. Chapel Ministers Planning Meeting (WORSHIP RESOURCE CTR)

Tuesday, February 7 - Spring Orientation

Wednesday, February 8

Thursday, February 9 - Spring Term Classes Begin

11:30 a.m. Chapel, Spring Convocation and Service of Installation

Friday, February 10

11:30 a.m. Chapel, Cliff Kirkpatrick, Service of Word and Table

1:30 p.m. Faculty Meeting

5 p.m. Campus Kids: Middle School Mania

HOURS OF OPERATION

ASC

Monday - Thursday

9 a.m. - 3:30 p.m.

Friday

9 a.m. - 2 p.m.

BOOKSTORE

Monday - Friday

8 a.m. - 4 p.m.

CAFETERIA

Breakfast: 8 - 10:30 a.m.

Lunch: 11:30 a.m. - 1:30 p.m.

WOMEN'S CENTER

Monday - Thursday

9 a.m. - 12 noon

or graceful coincidence

LIBRARY

Monday - Thursday

8 a.m. - 10 p.m.

Friday

8 a.m. - 5 p.m.

Saturday

Noon - 5 p.m.

Sunday

5 - 10 p.m.

THE LIBRARY WILL BE OPEN REGULAR HOURS THROUGH FEB. 3. HOWEVER, IT WILL BE CLOSED ON SATURDAY (2/4) AND SUNDAY (2/5).

TODAY - FEBRUARY 3, 2012

Bible Content Exam

Friday, February 3

10 a.m. – 12 noon

Computer Lab, Ernest M. White Library

Computer lab will be closed to the public during the hours of the exam.

Women's Center Potluck Dinner

Friday, February 3

6 p.m.

Women's Center, White Hall

No need to prepare anything—the V-Week planning committee has it covered! We would love for you to join us for good food and conversation about Eve Ensler's V-Day movement, and The Vagina Monologues production at LPTS.

ANNUAL REVIEWS

The annual review for **Amanda Brack** will take place on Friday, February 10. Please send your constructive comments about Amanda's work as the Library's Technical Services Specialist to either Angeles Ramos-Ankrum or Angela Morris by Monday, February 6.

The annual performance evaluation of **Marti Marsh** will take place on Wednesday, February 8. Please forward any comments you may have regarding her job performance as Controller by Monday, February 6, to her peer reviewer Lisa Miller or Pat Cecil.

The annual employee review for **Robin Hudson** will be held Thursday, February 9. Please direct your comments regarding Robin's performance as Administrative Coordinator to the Vice President and CFO to her supervisor, Patrick Cecil by 4 p.m. Wednesday, February 8.

The annual review for **Kilen Gray** will take place in late February. Please send your comments about Kilen's work as Dean of Students to either David Gray or his peer reviewer, Doug Gragg by Monday, February 20.

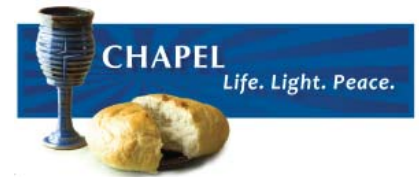
The annual review for **Cheri Harper** will take place in late February. Please send your comments about Cheri's work as Director of Recruitment and Admissions to either David Gray or her peer reviewer, Michelle Melton by Monday, February 20.

CHAPEL MINISTERS

You are invited to join Chapel Ministers for our first planning meeting of 2012!

The meeting will be this upcoming

Monday, February 6, from 10:30 a.m. -12:30 p.m., in the Worship Resource Center (by Fellowship Hall).



There is no long-term commitment required of you—come when you can! We're excited to plan new worship services for the community, but chapel for the community has to be **BY** the community. We'd love to have new faces join Chapel Ministers and add different perspectives on worship. All are welcome: students, faculty, staff, spouses, and children.

We'll be providing lunch and talking about upcoming worship services. Please come and help us get the spring semester started well!

*Rev. Dr. Dianne Reistroffer, Worship Coordinator;
Lucus Keppel and Katie Jasa, Student Worship Coordinators*

COVENANT FAMILY PRAYER

Loving and faithful God, you have been our dwelling place for all generations. We are especially grateful for your presence in this Seminary community as we teach and learn and work together. Bless these your servants who are our sisters and brothers as they go about their daily work, that they may do it in joyful response to your goodness and mercy:

**Bridget Couch, Andy Smith, Amanda Hayes,
Corrie Shull, David Hester, Melisa Scarlott, Elana Levy,
and their families.**

Enable them to seek after the truth; strengthen their minds to know it, their hearts to discern it and their hands to do it.

Be with them when they are in conflict; when they are sick, anxious, lonely or depressed; when they experience loss, failure, or humiliation. Help them to turn to you as the Great Physician and the Good Shepherd who loves them deeply and can heal any brokenness. O God, thank you for the gift of their lives. May they be touched by you and experience wholeness, peace, and joy on this day. Amen

FIELD EDUCATION

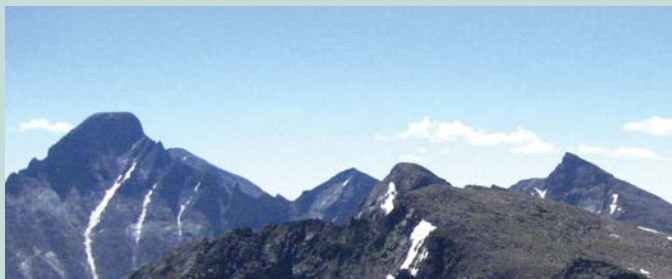
Field Ed Registration for spring FE experiences must be completed before the end of January. The FE Registration form is in the FE section of the LPTS website. We require two FE Registration forms each with an original signature.

Field Ed Time Sheets

Time Sheets are due on **Wednesday, February 8 by 1 p.m.**

Mileage Logs

Mileage logs for the month of January are **due no later than Monday, February 6.**



A Christian Ministry in the National Parks -- Date to Remember

On **Thursday, February 16**, Mr. Spencer Lundgaard, Executive Director of A Christian Ministry in the National Parks, will be on campus to talk to students about working full time in one of several national parks during summer 2012. He will be in the Winn Center from 9 a.m. to 2 p.m.

Additional information is in the FE office, SH104. Students may stop by SH104 to sign up for a time to talk to Mr. Lundgaard.



Future Field Ed Dates to Note

Monday, March 5	Supervisory Studies Program
Monday, April 2	Biosketches due from all students planning to interview for church placements
Monday-Friday April 16-20	Sign ups for church interviews
Friday, April 27	Field Ed interviews for church placements

CONVOCATION AND INSTALLATION

FEBRUARY 9, 2012 | 11:30 A.M. | CALDWELL CHAPEL

SHANNON CRAIGO-SNELL *Professor of Theology*



THE EMPTY CHURCH (Mark 16:1-8)

Bringing together theology and theater, Professor Shannon Craigo-Snell will explore the fears and hopes of emptiness in contemporary mainline Protestant churches.

INSTALLATION:

SHANNON CRAIGO-SNELL
as Professor of Theology

LEWIS BROGDON
*as Assistant Professor of Black Church
Studies and Director of the Black Church
Studies Program*

FEBRUARY BIRTHDAYS

- 1 Adam Kilchenman
James Monnett
Cody Natland
- 3 Chandra Irvin
Paul Scaglione
- 5 Derek Harris
- 6 Tammy Schmidt
- 8 Bobi Bilz
- 9 Lisa Kolb
- 10 Robin Hudson
- 11 James Blankenbeker
- 15 Janice Jasperse
Kenneth Jobst
- 16 Keri Liechty
- 17 Dana Butler
Justin Sayers
- 21 Rebecca Church
Marena Schindler
- 23 Alex Becker
DeEtte Huey
Emmanuel Omojola
- 24 Fran Schnuerle
- 25 Andrew Short
- 27 Kent Berry
Tumirror Jones
- 28 Maurice Blanchard
- 29 Lisa Williams



This week's message: *Faith and Political Rhetoric*

For some time now, a sort of economic and political rhetoric has grown up around the country. This rhetoric belongs exclusively neither to the Republican nor to the Democratic Party, and, indeed, has "liberal," "conservative," and "libertarian" supporters. Its variants are many. The premises of this view might be summarized as follows:

- Individuals have priority over community, and the only right that ultimately counts for anything is the right of the individual not to be constrained by the needs or interests of others.
- Altruism is suspect because the only thing we can vouch for with anything approaching certainty is the purity of self-interest and the will to survive.
- The single great power we can trust is the power of the economic free market to reward industry and provide the greatest good.
- The middle way, moderation, negotiation, and compromise are evils because morality has no shades of gray.

In recent years, we have all likely heard various applications of this rhetoric (and perhaps seen it on the silver screen, in the 2011 film *Atlas Shrugged*, based on the novel by atheist and ideologue Ayn Rand). We have heard this world view articulated by representatives of different political parties. Both liberals and conservatives have been among those who have exalted the "individual" to the point that the "individual" of whom they speak bears little to no real relationship to actual persons in community (the only sort of people who actually do exist!). Some politicians have run for office arguing that if persons do not have the means to afford health insurance society should, essentially, let them die. Others, building on the premise that welfare in certain circumstances unintentionally undermines personal responsibility and industry, go on to argue that, therefore, all social altruism and all programs to help the poor are confidence tricks. Such unyielding positions are correlated with one of the most disconcerting developments in contemporary politics: the rise of politicians who refuse to work together with other elected representatives for the common good if working together means listening, negotiating, and compromising.

Continue reading Michael's blog on his *Thinking Out Loud* page.

CAMPUS KIDS SCHEDULE

MIDDLE SCHOOL MANIA

Friday February 10
5-6:30 p.m.



YOUNGER CHILDREN

Monday, February 13
4:30-5 p.m.



ELEMENTARY-AGED CHILDREN

Monday, February 13
5-6 p.m.



WOMEN'S CENTER

SPRING SEMESTER ACTIVITIES



V-Week 2012:

Visit <http://www.vday.org/home> for more info. about Eve Ensler's campaign to end violence against women and girls.

Feb. 3, 6 p.m.: Potluck dinner at the Women's Center to discuss the V-Day movement. Let's reflect theologically on all of this!

Feb. 13: Worship service. Watch email for more details.

Feb. 15, 12:30-1:30 p.m.: Lunch panel discussion. Profs. Debra Mumford, Shannon Craigo-Snell, and Dr. Connie Martinez, who sits on the Board of Directors for La Casita Center (our local beneficiary this year).



Feb. 15, 8 p.m.: Venite Café, a coffeehouse-style Open Mic Night event, in the Winn Center Lounge. Free food and beverages. If you are interested in sharing your talent as an artist, singer, actor, dancer, etc. or have questions, please contact Elaine Dreeben at elaine.dreeben@my.lpts.edu

Feb. 16, 8 p.m.: *The Vagina Monologues* Dress Rehearsal (\$5 for students).

Feb. 17, 8:30 p.m.: *The Vagina Monologues* performance (\$10).

Light + Lunch gatherings:

Enjoy light lunch (free), and discussions with speakers of interest, at the Women's Center.

Feb. 29, 12:30 p.m.: Jamesetta Ferguson, Senior Pastor at St. Peters UCC Louisville

Mar. 28, 12:30 p.m.: Leah Bradley, Director of Alum & Church Relations at LPTS

April 18, 12:30 p.m.: Courtney Hoekstra, Associate for Advocacy Committee Support for the PC(USA)

Coming up...

Mar. 12, 1-4 p.m.: Child Abuse Recognition Training

In May.... A reception for graduating seniors.

Stay tuned for more details, and email the Women's Center (womenscenter@lpts.edu) for more information and to find out how to get involved! This promises to be a great semester!

Visit the Women's Center Blog!

STAFF COUNCIL MEETING

What: Staff Council Meeting

When: Tuesday, February 14, 2012, 2 p.m.

Where: Nelson Hall #119

SCHOLARSHIP OPPORTUNITY

GENE & FAYE SANTAVICCA CHRISTIAN MINISTRY SCHOLARSHIP

A candidate for this scholarship shall preferably be or have been a member or an affiliate member of the Oxford Presbyterian Church, Oxford, OH. Should candidates not be found within their membership, consideration may be given to qualified candidates of other congregations of the Presbyterian Church (U.S.A.).

Deadline for materials is April 30, 2012.

Copies of the instructions for submitting applications are on the table outside Bonnie Klotz's Office, Nelson Hall 110.

ST. JOHN'S PRESBYTERIAN CHURCH SCHOLARSHIP

Any active member of any particular church of the Presbyterian Church (U.S.A.) is eligible to apply for a grant. Individuals applying for a grant must be an Inquirer or Candidate preparing for Ordination to the Office of Minister of the Word and Sacrament of the PCUSA.

Applications are available on the church website at www.stjohnschurch.org and the **deadline is June 1, 2012.**



SPECIAL LUNCH FORUM

Keatan King, a senior Master of Divinity student, and her supervising pastor, Rev. Dr. Ted Foote, Senior Pastor at FPC-Bryan, TX, will be leading a program on her fifteen-month internship at FPC-Bryan (home of the Texas A & M Aggies) and "Fresh Expressions of Ministry among Young Adults." Keatan and Ted are participating in the midyear evaluation process required of students engaged in long-term internships as part of their field education work. Keatan will be drawing on her work in an independent study with Professor Cliff Kirkpatrick as well as her ministry experiences in Texas.



King



Foote

You are cordially invited to a free salad luncheon buffet and the program on **Monday, February 13**, from 12:30 to 1:20 p.m. in Schlegel Hall 121.

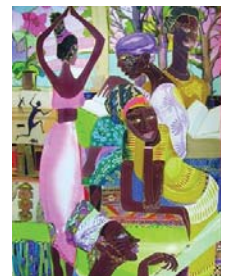
We know there is a lot going on at the start of the term, but we hope you can come and welcome Keatan back to the campus and welcome Dr. Foote as a first-time visitor. Students, if you ever considered a yearlong internship between your second and third year, Keatan's program will help you assess the benefit of this kind of experience.

Please RSVP by Friday, Feb. 10, to Laura March if you plan to come.

Dianne Reistroffer
Director of Field Education and Methodist Studies



Founded in 1991, the **Saturday Academy** is an outreach program of the College of Arts and Sciences (University of Louisville) designed to bring African world history, heritage and the on-going discussion of pertinent issues into the local community. The Academy represents a collaboration between the University and several key community partners: the Jefferson County Public Schools, the Louisville Urban League, Metro Councilwoman Cheri Bryant Hamilton, the U of L Department of Pan-African Studies and the Kentucky Center for African American Heritage.



The African World Seminar, led by Dr. Blaine Hudson, meets from 11 am to 12:30 p.m. The theme for 2011-2012 is *The History and Heritage of Black Louisville*.

The African World Discussion Group follows from 12:45 to 2 p.m.

February 18: The Black Leadership Series
Black Church Leadership: Characteristics, Challenges and Recommendations

Dr. Lewis Brogdon **Rev. Kilen Gray**
Dr. Debra Mumford **Dr. Elizabeth Walker,**

Visit the Saturday Academy webpage more details.



Dr. Johanna Bos will be speaking at The Temple on Friday, February 17 at 7:30 p.m.

The Temple
5101 US HWY 42
Louisville, KY 40241

INTERFAITH SHABBAT
FRIDAY FEBRUARY 17, 2012 7:30 P.M. THE TEMPLE

LOVE JUSTICE FAMILY COMMUNITY CHARITY HOPE PEACE FRIENDSHIP
LOVE JUSTICE CHARITY HOPE PEACE FRIENDSHIP

The Temple Welcomes
Rev. Dr. Johanna W.H. van Wijk-Bos
Professor of Bible at Louisville Presbyterian Theological Seminary

Between Faiths - an exploration of the disposition toward the "other" in an interfaith context

M E N U

BREAKFAST: 8 - 10:30 A.M.

LUNCH: 11:30 A.M. - 1:30 P.M.

February 6 - 10

Monday

Roasted Chicken Quarter with Peaches, Red Pepper & Broccoli Quiche,
Basmati Rice, Steamed Vegetable Medley,
Pea Pods and Vegetables, Roll

Tuesday

Pork Shoulder, Pasta with Marinara Sauce,
Cinnamon Apples, Mashed Potatoes with Gravy,
Country Style Green Beans, Corn Bread

Wednesday

Chicken Breast Sandwich, Brushetta Sandwich,
Oven Roasted Potatoes, Broccoli Casserole,
Onion Rings, Roll

Thursday

Chicken Breast with Capers & Wine, Spinach Salad,
Country Fried Potatoes, Lima Beans,
Oven Roasted Vegetables, Roll

Friday

Grilled Burger, Baked Tilapia,
French Fries, Steamed Rice,
Sautéed Cabbage, Steamed Vegetable Medley, Roll